

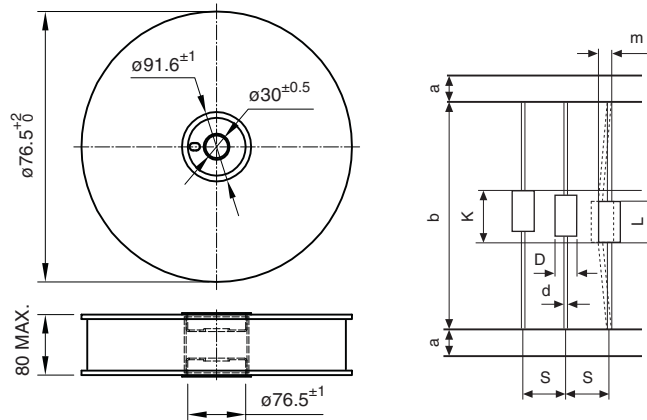
Packaging specifications

Dimensions in mm.

AXIAL DEVICES

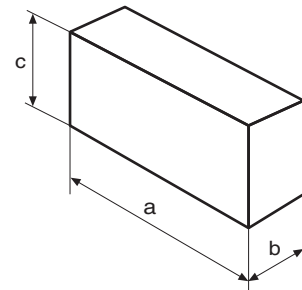
REEL PACKAGING (Suffix TR)
(Under IEC-CEI 286-1 and RS-296 D)

CASE TYPE (OUTLINE)	REEL DIMENSIONS					UNITS PER REEL	APROX. GROSS WEIGHT PER REEL PACKED
	a	b	k	m	S		
DO-41 Mini	6 ±1	53 ±2	6.4	1.2	5 ±0.5	5000	1.78 Kg.
DO-41	6 ±1	53 ±2	6.4	1.2	5 ±0.5	5000	2.1 Kg.
A-405	6 ±1	53 ±2	7.85	1.2	5 ±0.5	5000	1.93 Kg.
DO-15	6 ±1	53 ±2	7.85	1.2	5 ±0.5	4000	1.9 Kg.
	6 ±1	53 ±2	7.85	1.2	5 ±0.5	3500 *	2.175 Kg. *
DO-201AD	6 ±1	53 ±2	11	1.2	10 ±0.5	1500	2 Kg.
	6 ±1	53 ±2	11	1.2	10 ±0.5	1250 *	2.1 Kg. *
DO-201AE	6 ±1	53 ±2	11	1.2	10 ±0.5	1500	2 Kg.
P-6	6 ±1	53 ±2	11.27	1.2	10 ±0.5	800	2.4 Kg.
R-6	6 ±0.4	52.4 ±1.5	11.1	1.2	10 ±0.5	1000	2.4 Kg.



AMMO BOX PACKAGING (SUFFIX "AMP")

CASE TYPE (OUTLINE)	BOX SIZE			AMMO PACK UNIT/BOX	APROX. GROSS WEIGHT/PACKAGE
	a	b	c		
DO-41 Mini	260	90	120	3000 *	0.97 Kg.
DO-41	260	90	120	3000 *	1.3 Kg.
	286	80	152	5000	1.9 Kg.
A-405	260	90	120	3000 *	1.06 Kg.
DO-15	260	90	120	1500 *	0.88 Kg.
	286	80	152	4000	1.7 Kg.
DO-201AD	260	90	120	500 *	0.81 Kg.
	286	80	152	1500	1.8 Kg.
DO-201AE	286	80	152	1500	1.8 Kg.
P-6	286	80	152	400	1.02 Kg.



* Only valid for Schottkies.
General tolerance: ±2 mm.